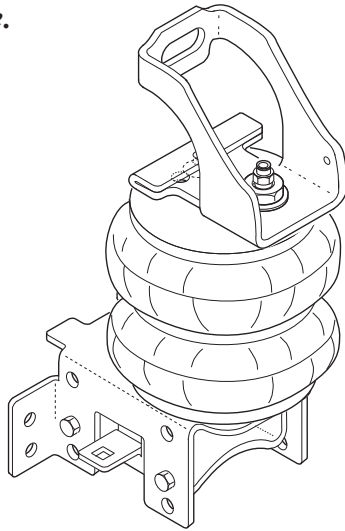


**DO NOT INSTALL** if the truck has been lifted and the stock jounce bumper spacers are not on the vehicle.



### INSTALLATION INSTRUCTIONS

Congratulations - your new Air Helper Springs are quality products capable of improving the handling and comfort of your vehicle. As with all products, proper installation is the key to obtaining all of the benefits your kit is capable of delivering. **Please take a few minutes to read through the instructions to identify the components and learn where and how they are used.** It is a good idea to start by comparing the parts in your kit with the parts list below.

The heart of the air helper spring kit is, of course, the air springs. Remember that the air helper springs must flex and expand during operation, so be sure that there is enough clearance to do so without rubbing against any other part of the vehicle.

Be sure to take all applicable safety precautions during the installation of the kit. The instructions listed in this brochure and the illustrations all show the left, or driver's side of the vehicle. To install the right side assembly simply follow the same procedures.

### PARTS LIST

224C AIR SPRING	6401	2	5/16" - 24 X 3/4" HEX HEAD BOLT	1
UPPER BRACKET	5572	2	5/16" - 24 FLANGE NUT	1
LOWER BRACKET	5379	2	5/16" FLAT WASHER	4
SADDLE BRACKET	5380	2	3/8"-16 X 3/4" FLANGED BOLT	2
FUEL LINE BRACKET	5428	1	3/8"-16 X 1" HEX HEAD BOLT	8
BRACKET STRAP	1163	2	3/8"-16 X 2 1/2" FLAT HEAD BOLT	2
1/2" SPACER	5477	2	3/8"-16 FLANGE LOCK NUT	18
BAILCLAMP	3077	2	3/8" LARGE FLAT WASHER	2
HEAT SHIELD	1004	1	3/8"-16 X 3" CARRIAGE BOLT	4
AIR LINE TUBING		1	3/4"-16 X 1-3/4" HEX HEAD BOLT	2
			3/4"-16 HEX NUT	2
			3/4"-16 FRAME NUT	3412
			3/4" INTERNAL TOOTH LOCK WASHER	2
			3/4" THICK FLAT WASHER	2
			3/4" FLAT WASHER	2
			3/4" LOCK WASHER	2
			INFLATION VALVE	3032
			STRAIGHT FITTING	3046
			THERMAL SLEEVE	2
			NYLON TIE	6
			CAUTIONTAG	2

### WARNING:

Do not inflate this assembly when it is unrestricted. The assembly must be restricted by the suspension or other adequate structure. Do not inflate beyond 100 psi. Improper use or over inflation may cause property damage or severe personal injury.

***The air springs in this kit have a minimum pressure of 5 psi and maximum of 100 psi after the truck is loaded.***

Your kit includes separate inflation valves and air lines for each air helper spring. This will allow you to level your vehicle from side to side as well as from front to back. If you would rather have a single valve inflation system, your dealer can supply the optional "T" fitting.

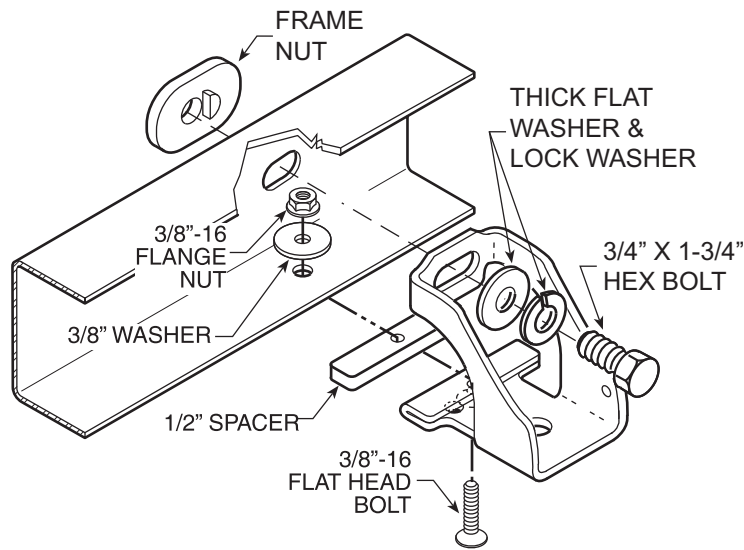
### IMPORTANT!

***For your safety and to prevent possible damage to your vehicle, do not exceed the maximum load recommended by the vehicle manufacturer (GVWR). Although your Air Helper Springs are rated at a maximum inflation pressure of 100 psi, this pressure may allow you to carry too great a load on some vehicles. It is best to have your vehicle weighed once it is completely loaded and compare that weight to the maximum allowed. Check your vehicle owner's manual or data plate on driver's side door for maximum loads listed for your vehicle.***

*When inflating your Air Helper Springs, add air pressure in small quantities, checking pressure frequently during inflation. The air spring requires much less air volume than a tire and, therefore, inflates much quicker.*

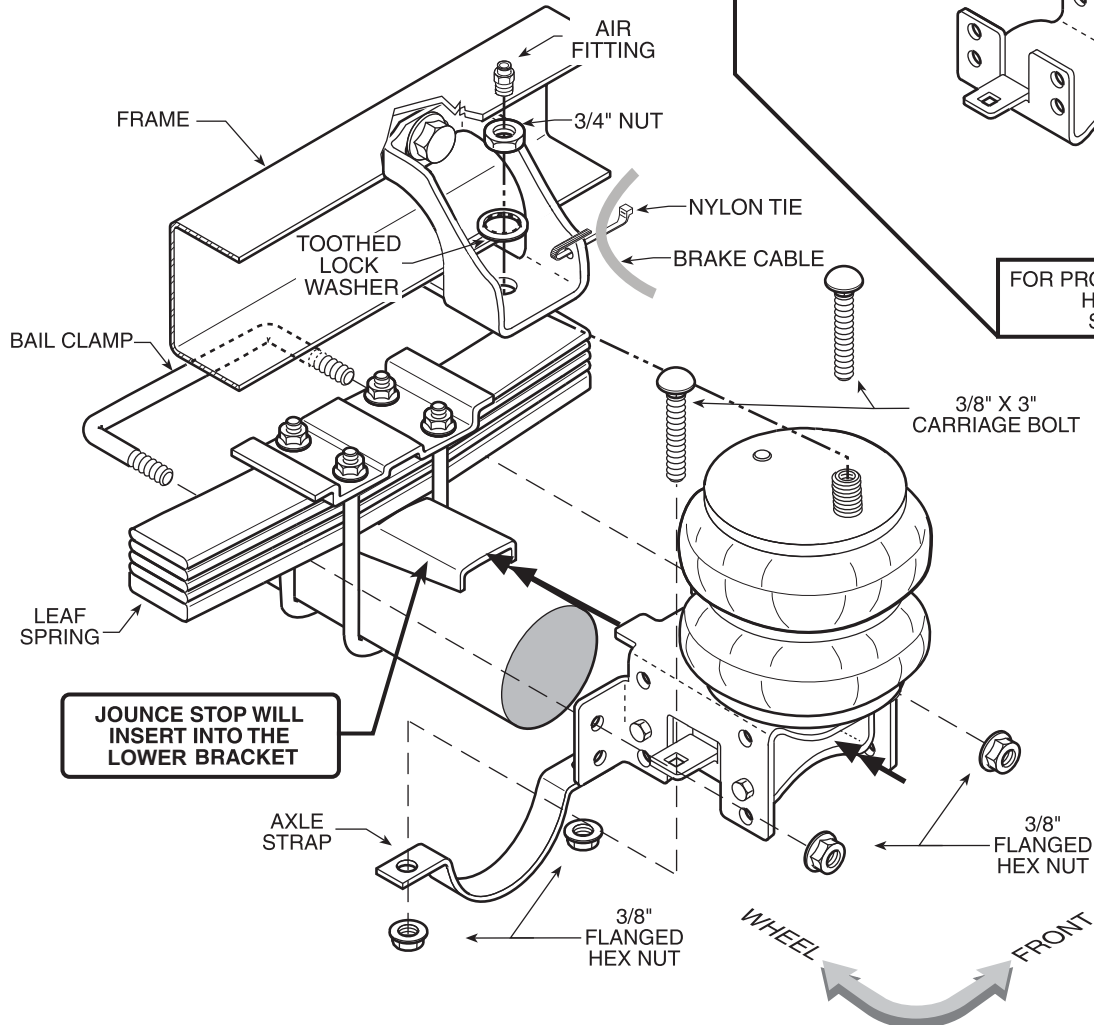
***Remove the negative battery cable. It is not necessary to jack up the truck to install this Ride-Rite kit, if you DO, please use chocks in front of the front tires. Also, use jack stands beneath the truck's rear axle that are properly rated to support the trucks weight.***

### BOLT PACK (A217602520)



**UPPER BRACKET ATTACHMENT**

**KIT TO FRAME ASSEMBLY**

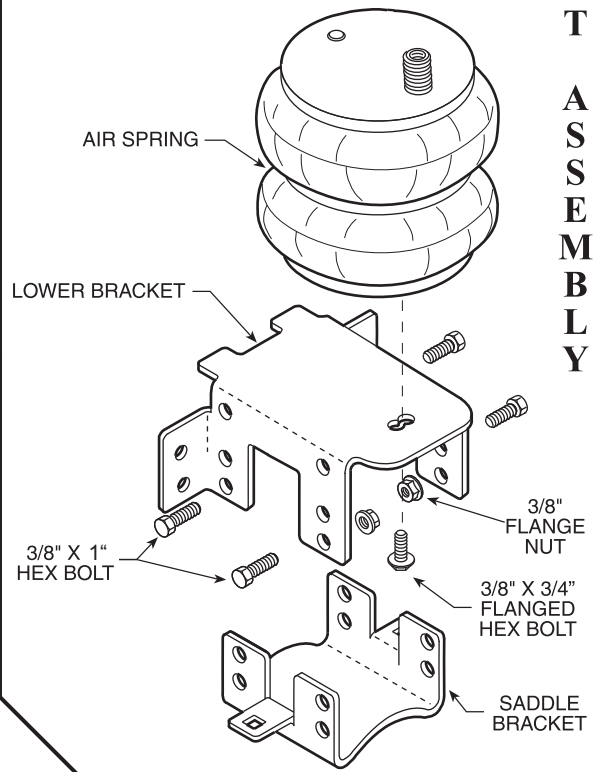


**BOUNCE STOP WILL INSERT INTO THE LOWER BRACKET**

**FIGURE "A"**

**NOTE:** This diagram is of the left side of the truck. Reverse any orientations when assembling and installing the right side of the vehicle.

**K I T A S S E M B L Y**



**FOR PROPER LOWER BRACKET HEIGHT SETTING, SEE FIGURE "C"**

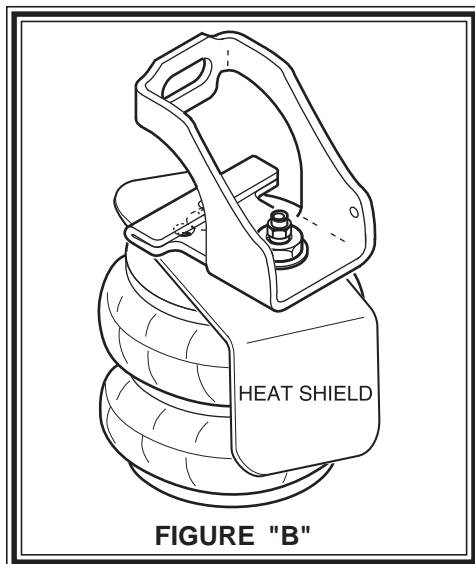


FIGURE "B"

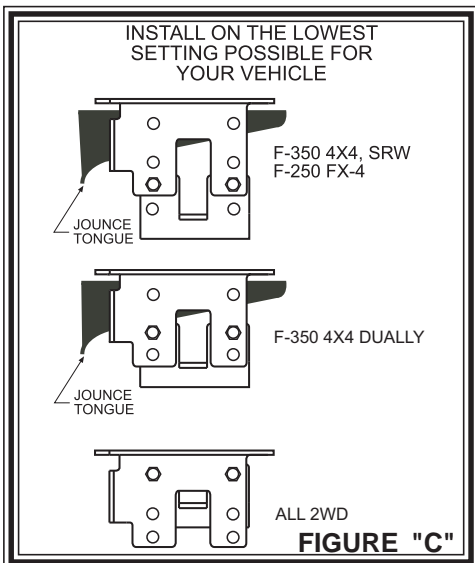


FIGURE "C"

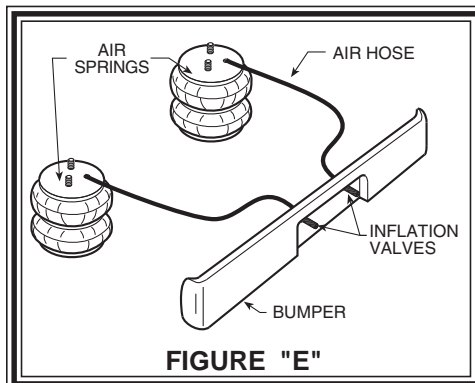
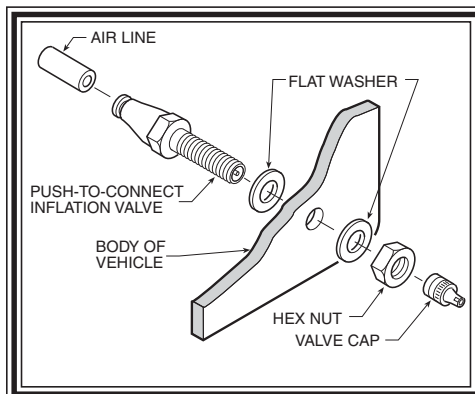


FIGURE "E"

### STEP 1 - PREPARE THE VEHICLE

On some vehicles some lines must be repositioned on the left side of the vehicle. Remove the nut holding the fuel line retaining clip. Rotate the retaining clip 90 degrees with the stud facing down. Install the relocating bracket with the nut previously removed. Next, fasten the retaining clip to the relocation bracket using a 5/16"-24 x 3/4" bolt and 5/16"-24 flange nut.

Your vehicle is equipped with rubber jounce bumpers attached to the frame directly above the axle. Remove these bumpers by un-bolting from the inside of the frame flange. These bumpers and nuts will not be re-used with this kit.

### STEP 2- UPPER BRACKET INSTALLATION

Insert the 3/8"-16 x 2-1/2" flat head bolt into the upper bracket and then slide the spacer over the bolt. Install the upper bracket onto the frame. Make sure that no part of the vehicle's wiring will be pinched between the upper bracket and the frame. Tighten the 3/8"-16 flat head bolt with a 3/8"-16 flange nut and the large 3/8" washer. Install the 3/4"-16 x 1-3/4" hex bolt thru the upper bracket and thru the existing hole in the frame rail. Secure the 3/4" bolt with a thick flat washer, lock washer, and a 3/4" frame nut. Use an additional 3/4" washer if needed.

The emergency brake cable will have to be tie-wrapped out of the way using the hole provided in the upper bracket. See Figure "A".

### STEP 3 - AIR SPRING INSTALLATION

Install the air springs and heat shield. The heat shield will be used on the exhaust side of the truck only. It is placed between the upper bracket and the top of the air spring. The top of the air spring has a button which will be put into the hole in the upper bracket, towards the front of the truck on both sides. When the air spring is in place and properly lined up, place the internal tooth lock washer and then the large 3/4" nut onto the top stud of the air spring. On the right (exhaust) side, you can move the heat shield into alignment before tightening the top nut on the air spring. Make sure the heat shield will not interfere with the normal operation of the air spring or the vehicle's suspension. Do not position the face of the shield directly over the axle, as it may contact the axle on full suspension compression.

Now install the air fitting into the top stud of the air spring. Tighten the air fitting securely to engage the orange thread sealant.

### STEP 4 - LOWER BRACKET INSTALLATION

Some trucks will have a cast iron jounce tongue as shown in figure A. If this jounce tongue is present, the height setting of the lower bracket will be just above the jounce tongue (to clear the head of the bolt going into the bottom of the air spring). If there is no jounce tongue, simply assemble the lower and saddle brackets at the shortest setting. See figure "C".

*The lower bracket assembly should be installed on the lowest setting possible for the vehicle. See Figure "C".*

The saddle and lower brackets are bolted together using the four 3/8" x 1" bolts and flange nuts. When the lower brackets are bolted together at the proper height, install the 3/8" x 3/4" bolt thru the forward hole in the lower bracket and into the bottom of the air spring and tighten.

Place the lower bracket assembly against the leaf spring stack making sure that the top of the bottom bracket is wedged between the axle U-bolts. Place the bail clamp around the axle block and install the flange nuts onto the bail clamp and tighten the 3/8" flange nuts [FIG. A].

