

SuperSprings®

Suspension Enhancement

Chevrolet C5500 Class C RV

[03' - present]

SuperSprings part#SSA17 w/ PSP-1

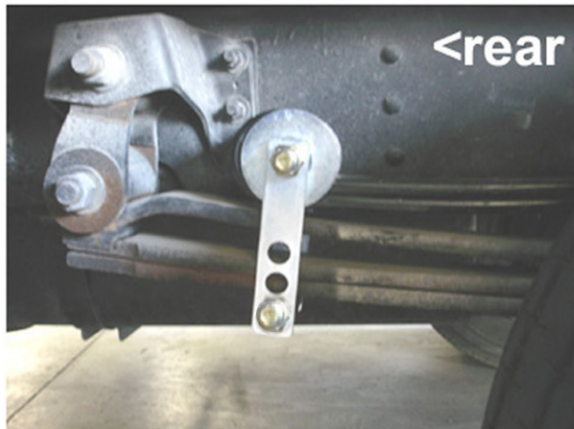
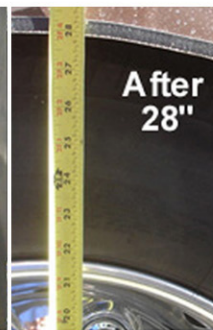


Jayco Seneca

Poly Spring Pad ~ PSP-1



Polyurethane block designed to mount between the top of the factory spring seat and bottom the SuperSpring



Refer to SuperSprings application guide for part selection www.supersprings.com [Tech line #866-898-0720]
SuperSprings enhance load carrying capability, handling & towing. Never exceed vehicle manufacturer's GVWR rating.

revdate122007