

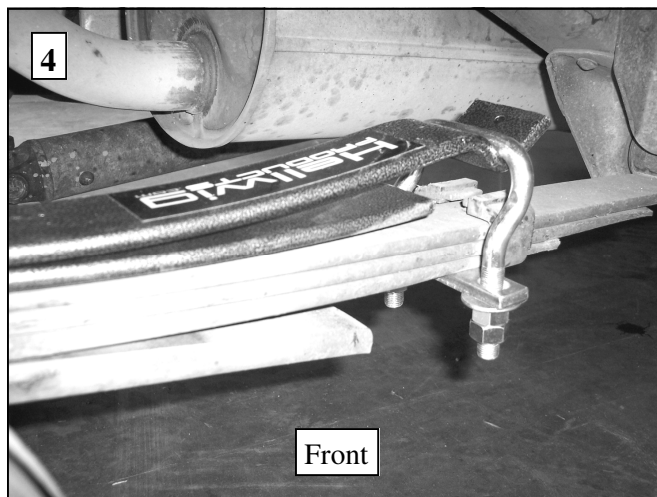
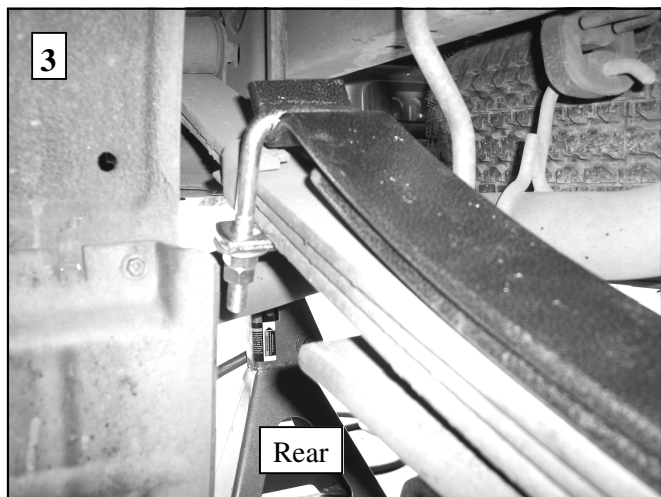
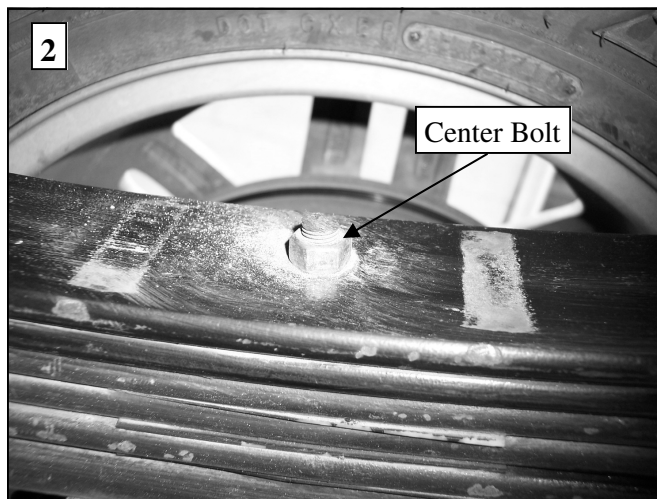
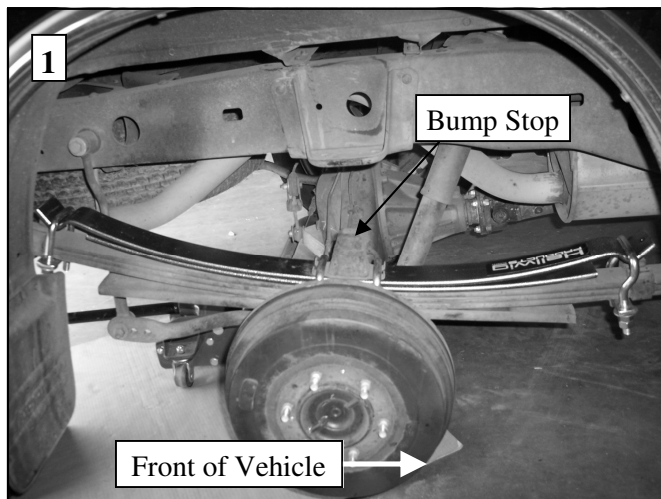
# Hellwig PRODUCTS.com

559-734-7451 800-367-5480 FAX 559-734-7460

## INSTALLATION INSTRUCTIONS

Thank you for purchasing a quality Hellwig Product.

PLEASE READ THIS INSTRUCTION SHEET COMPLETELY BEFORE STARTING YOUR INSTALLATION



### TOOLS REQUIRED:

- Hacksaw
- Standard Wrenches
- Clamp
- Ratchet
- Jack Stand
- Torque Wrench
- Standard Sockets
- Floor Jack
- Wheel Chocks

**SAFETY:** BEFORE STARTING YOUR INSTALLATION, BE SURE TO SET PARKING BRAKE AND CHOCK TIRES.

**IMPORTANT NOTE:** HELLWIG HELPER SPRINGS ARE DESIGNED TO INCREASE THE "LEVEL LOAD" CARRYING CAPACITY OF YOUR VEHICLE. NEVER LOAD THE VEHICLE THAT THIS UNIT IS BEING INSTALLED ON BEYOND THE MANUFACTURER'S MAXIMUM GROSS VEHICLE WEIGHT RATING.

**NOTE:** If your vehicle has a lift block, either reuse the lift kit U-bolts you removed in step 3 if there is enough thread or you will have to purchase longer U-bolts

# Hellwig PRODUCTS.com

559-734-7451 800-367-5480 FAX 559-734-7460

1. Be sure that the vehicle is on a flat, hard surface with the emergency brake on and the front wheels chocked.
2. Put the Hellwig springs together with the shorter spring underneath the longer spring with the “spring cups” on each end.
3. Remove the U-bolts holding the axle to the factory spring pack on one side with the tires still on the ground. Keep the bump stop to be reinstalled. We recommend doing one side of the vehicle at a time.
4. Lift the vehicle by the frame, allowing the wheels to stay on the ground and the springs to separate from the axle. It may be necessary to remove the back wheel to let the axle drop enough to remove the center bolt. If that is the case, be sure to use adequate jack stands on the axle and the vehicle frame when working on the vehicle.
5. Clamp the factory leaves together using a C-Clamp to keep them from shifting and then remove the center bolt from the factory leaf pack.
6. Place the Hellwig springs on top of the factory leaf pack with the long side backwards, line up the center holes and use the included center bolt to hold them all together as shown in Photo 1 and Photo 2. Torque the center bolt. If necessary, you can cut off any extra length of the center bolt.
7. Lower the vehicle and spring back onto the axle, making sure the center bolt head goes into the hole on the spring perch.
8. Use the included 9/16 x 8” U-bolts and hardware to reattach the axle to the springs. Make sure to replace the factory bump stop. Torque these to 130 ft-lbs.
9. Repeat steps 3-8 for the other side of the vehicle.
10. Use the 9/16 x 6” Z-shaped U-bolts on the front of the vehicle spring with the legs facing downwards along with the cross bars, nuts and washers as shown in Photo 3. Tighten the U-bolts down and then double nut to hold in place. The tighter the U-bolts are, the more load the springs will support. The minimum distance between the bottom of the Hellwig spring cup and the factory spring is 1/2 inch. Adjust to your needs.
11. Use the 1/2 x 4” U-bolts towards the rear of the vehicle. Install the U-bolts with the legs facing down and use the cross bar, washers and nuts to hold in place. Tighten the U-bolts down and then double nut to hold in place. The tighter the U-bolts are, the more load the springs will support. The minimum distance between the bottom of the Hellwig spring cup and the factory spring is 1/2 inch. Adjust to your needs.
12. Bounce the vehicle and check your installation for clearance to fuel and brake lines, hoses, wires, etc. Test drive your vehicle and recheck your installation. Recheck on a regular basis thereafter.

**ATTENTION INSTALLER: BE SURE THAT THE CUSTOMER RECEIVES THIS INSTRUCTION SHEET,  
ALL IMPORTANT NOTE CARDS AND THE WARRANTY FORM**

## **Maintenance and Inspection:**

Your Hellwig Suspension Product is built to last. However, as with all vehicle systems, it requires routine inspection. Inspect your Hellwig installation looking for secure hardware and tight fitting brackets and bushings. If you do not perform this inspection, have your professional mechanic inspect as described.