

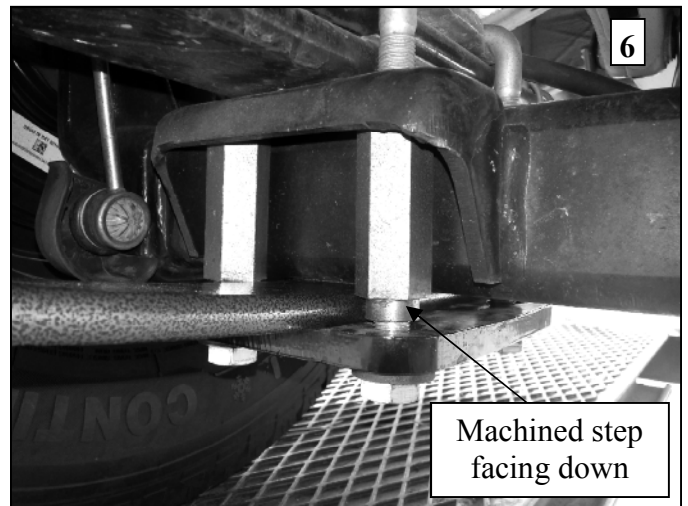
# Hellwig PRODUCTS.com

559-734-7451 800-367-5480 TechSupport@HellwigProducts.com

## INSTALLATION INSTRUCTIONS

Thank you for purchasing a quality Hellwig Product.

PLEASE READ THIS INSTRUCTION SHEET COMPLETELY BEFORE STARTING YOUR INSTALLATION



# Hellwig PRODUCTS.com

559-734-7451 800-367-5480 TechSupport@HellwigProducts.com

Hellwig Products Company, located in Visalia, California was founded in 1946 with solutions for load and sway control. The family operated company produces components for trucks, RVs, muscle cars, fleets and military vehicles. Hellwig is ISO9001 certified and is proud to develop, test and manufacture products in the USA.

**SAFETY: BEFORE STARTING YOUR INSTALLATION, BE SURE TO SET PARKING BRAKE AND CHOCK TIRES.**

**SAFETY: ONLY INSTALL ONE SIDE OF THE HELPER SPRING AT A TIME AND FULLY FINISH THE INSTALL ON THAT SIDE BEFORE STARTING THE OTHER SIDE**

**IMPORTANT NOTE: HELLWIG HELPER SPRINGS ARE DESIGNED TO INCREASE THE “LEVEL LOAD” CARRYING CAPACITY OF YOUR VEHICLE. NEVER LOAD THE VEHICLE THAT THIS UNIT IS BEING INSTALLED ON BEYOND THE MANUFACTURER’S MAXIMUM GROSS VEHICLE WEIGHT RATING.**

1. Attach the four bump stops in the holes on the leaf tips using the 3/8” washer and lock nut as seen in Photos 3 and 4.
2. Thread the short, 3/8” bolts into the center hole of the 5 hole plate using a washer on the bolt head as seen in Photo 1.
3. Be sure that the vehicle is on a flat, hard surface with the emergency brake on and the front wheels chocked.
4. Remove the U-bolt nuts holding the axle to the factory spring pack with the tires still on the ground. We recommend doing one side of the vehicle at a time.
5. Replace the factory U-bolt nuts with the included Hellwig extension nuts. Make sure the machined step is facing down when the new nuts are installed and reuse the factory washers as seen in Photos 2 and 6.
6. Torque the new extension nuts to 90 ft-lbs.
7. Loosely attach the 5 hole plate, with the stud facing up, to the tire side of the U-bolts by threading the two 14mm bolts and washers into the extension nuts from Step 5 as seen in Photo 2.
8. Slide the Hellwig spring between the axle and the 5 hole plate with the bump stops facing up.
9. Attach the Hellwig helper spring by threading the two remaining, inner 14mm bolts (with a washer) through the 5 hole plate into the bottom of the extension nuts already attached to the factory U-bolts as seen in Photos 5 and 6. Make sure the bolt from Step 2 is resting in the center hole of the leaf spring.
10. Torque the 14mm bolts to 90 ft-lbs.
11. Now that one side is completely installed, repeat steps 4-10 for the other side of the vehicle.
12. Bounce the vehicle and check your installation for clearance to fuel and brake lines, hoses, wires, etc. Test drive your vehicle and recheck your installation.
13. After 100 miles, recheck the toques and then check on a regular basis thereafter.

**ATTENTION INSTALLER: BE SURE THAT THE CUSTOMER RECEIVES THIS INSTRUCTION SHEET, ALL IMPORTANT NOTE CARDS AND THE WARRANTY FORM**

## **Maintenance and Inspection:**

Your Hellwig Suspension Product is built to last. However, as with all vehicle systems, it requires routine inspection. Inspect your Hellwig installation looking for secure hardware and tight fitting brackets. If you do not perform this inspection, have your professional mechanic inspect as described.