

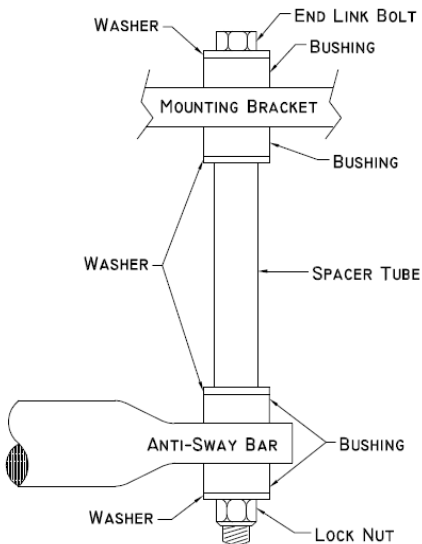
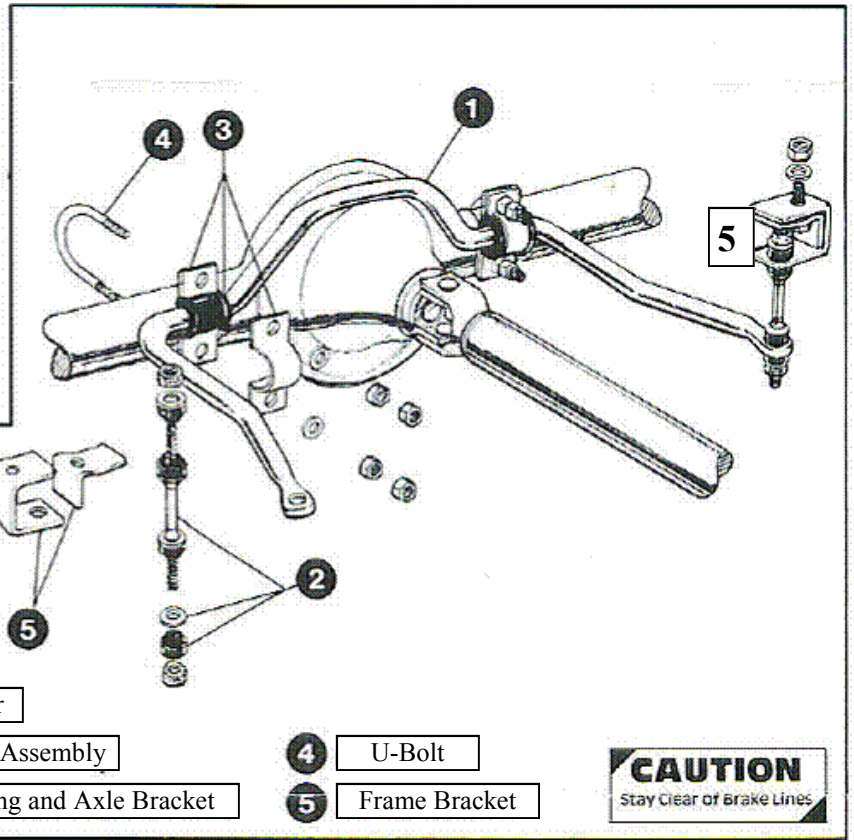
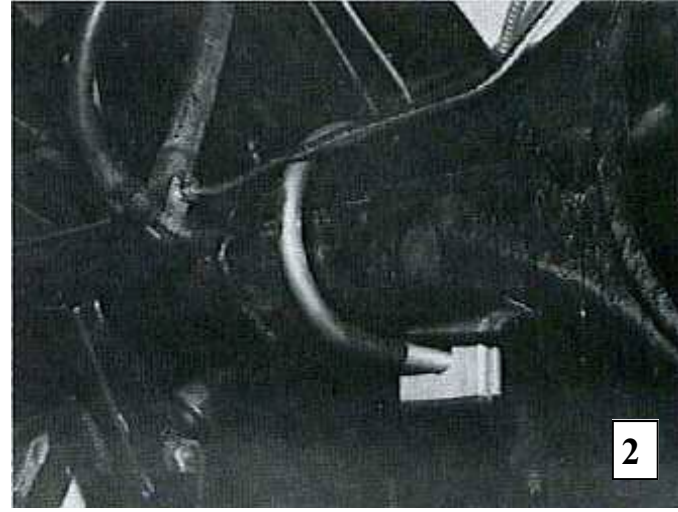
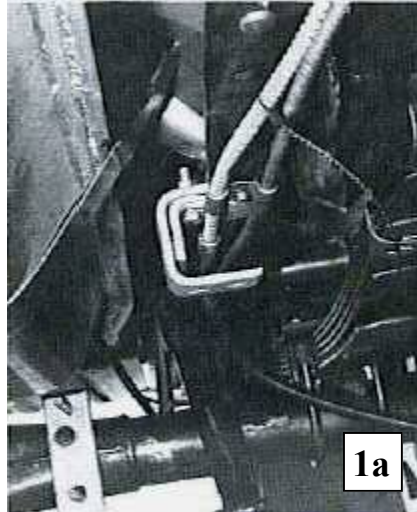
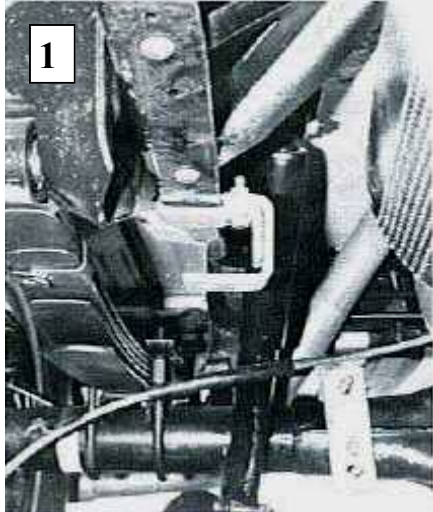
# Hellwig PRODUCTS.com

559-734-7451 800-367-5480 FAX 559-734-7460

## INSTALLATION INSTRUCTIONS REAR STABILIZER BAR

Thank you for purchasing a quality Hellwig Product.

PLEASE READ THIS INSTRUCTION SHEET COMPLETELY BEFORE STARTING YOUR INSTALLATION



# Hellwig PRODUCTS.com

559-734-7451 800-367-5480 FAX 559-734-7460

**SAFETY: BEFORE STARTING YOUR INSTALLATION, BE SURE TO SET PARKING BRAKE AND CHOCK TIRES.**

**NOTE: TO EASE INSTALLATION AND TO PROPERLY ADJUST THE BAR, THE WEIGHT OF THE VEHICLE MUST BE ON THE SUSPENSION, AS IF DRIVING DOWN THE ROAD. DO NOT RAISE VEHICLE BY THE FRAME.**

**NOTE: THIS KIT MAY INCLUDE LOCK NUTS WHICH REQUIRES TIGHTENING WITH A WRENCH AFTER BEING STARTED BY HAND.**

## **TORQUE TABLE**

**BOLT SIZE:** 3/8" = 20-30 ft. lbs. – 7/16" = 35-45 ft. lbs. – 1/2" = 50-70 ft. lbs. – 9/16" = 70-90 ft. lbs.-5/8"=120 ft. lbs.

1. As in Photos 1 and 1a, install the frame components shown. Be sure there are no wires, brake lines or fuel lines that can be damaged by these components. Do not tighten at this point.
2. Using Photos 2 and 3, install the sway bar axle components on the left and right sides. Be sure the U-bolt is under the brake line. At this point, raise the sway bar up to the axle. Lubricate the insides and install the D-bushings in the approximate area they will mount to the axle components, place tie-down bracket over the bushings and U-bolt and install the washers and nuts. Do not tighten.
3. Install the end links as per the line drawing above. Do not over tighten these nuts. Tighten just until the bushings begin to bulge slightly.
4. Align the end links to be in a vertical or near vertical position. Tighten the frame brackets securely and double nut the cap screw.
5. Be sure the axle plates are located over the axle studs. Tighten these nuts completely so the U-bolt conforms to the axle, around its diameter.
6. Bounce the vehicle and check for clearance on all undercarriage components. Be sure all nuts and bolts are securely fastened and double nuts used where necessary or provided.
7. Recheck your installation, look for clearance between gas lines, exhaust pipes, brake lines, wiring, etc. After one week of driving check your installation and periodically thereafter.

**ATTENTION INSTALLER: BE SURE THE CUSTOMER RECEIVES THIS INSTRUCTION SHEET, ALL IMPORTANT NOTE CARDS, WARNING CARDS AND THE WARRANTY FORM.**