

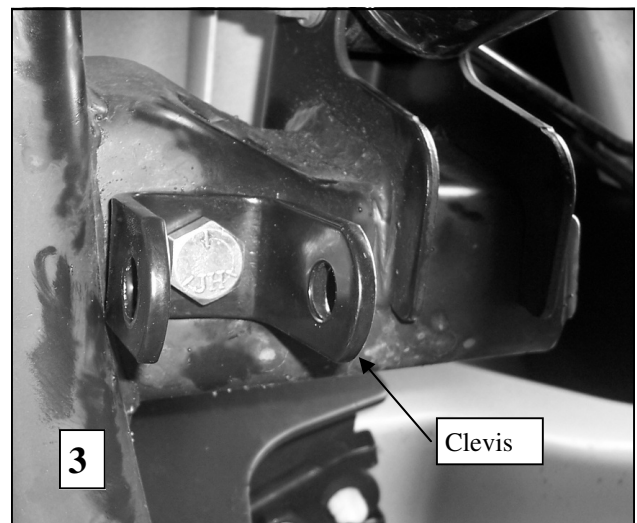
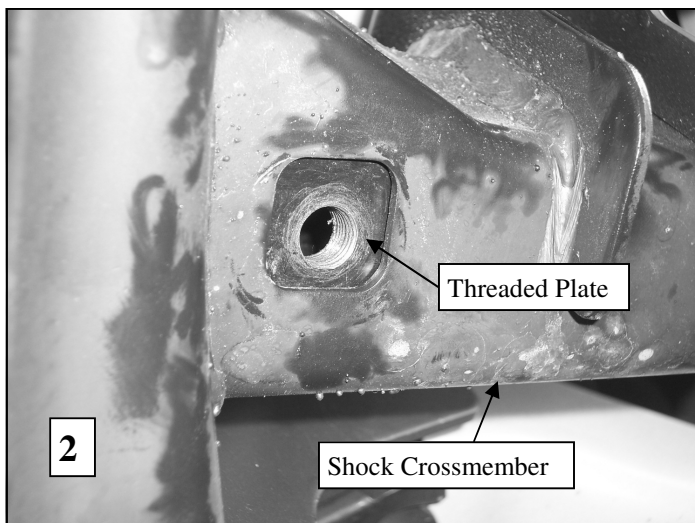
Hellwig PRODUCTS.com

559-734-7451 800-367-5480 FAX 559-734-7460

INSTALLATION INSTRUCTIONS REAR STABILIZER BAR

Thank you for purchasing a quality Hellwig Product.

PLEASE READ THIS INSTRUCTION SHEET COMPLETELY BEFORE STARTING YOUR INSTALLATION



Maintenance and Inspection:

Your Hellwig Suspension Product is built to last. However, as with all vehicle systems, it requires routine inspection. Inspect your Hellwig installation looking for secure hardware and tight fitting brackets and bushings. If you do not perform this inspection, have your professional mechanic inspect as described.

Hellwig PRODUCTS.com

559-734-7451 800-367-5480 FAX 559-734-7460

SAFETY: BEFORE STARTING YOUR INSTALLATION, BE SURE TO SET PARKING BRAKE AND CHOCK TIRES.

NOTE: TO EASE INSTALLATION AND TO PROPERLY ADJUST THE BAR, THE WEIGHT OF THE VEHICLE MUST BE ON THE SUSPENSION, AS IF DRIVING DOWN THE ROAD. DO NOT RAISE VEHICLE BY THE FRAME.

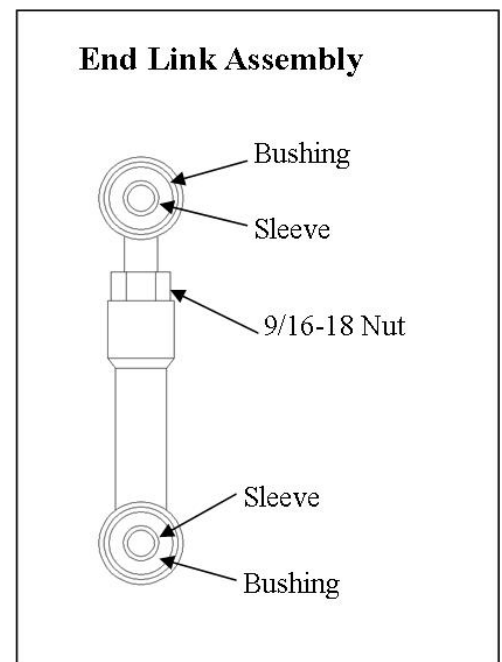
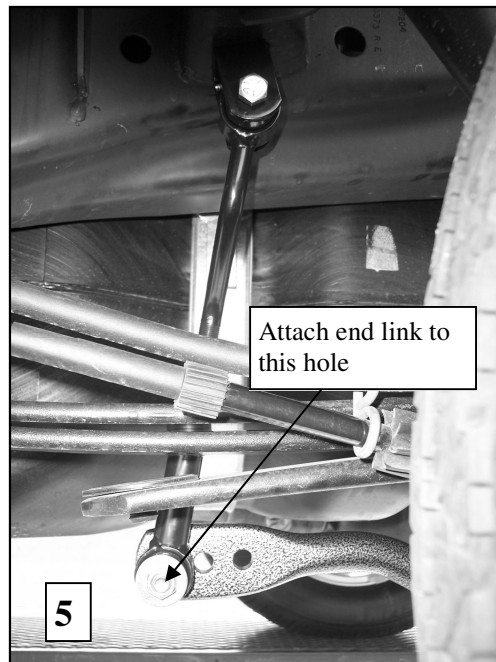
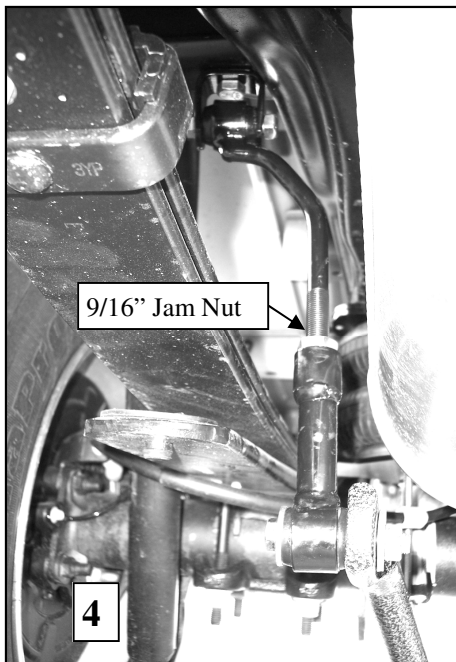
NOTE: THIS SWAY BAR IS DESIGNED TO MOUNT ON THE REAR OF THE DIFFERENTIAL WITH THE ARMS TO WARDS THE FRONT OF THE VEHICLE.

NOTE: THIS KIT INCLUDES LOCK NUTS WHICH REQUIRES TIGHTENING WITH A WRENCH AFTER BEING STARTED BY HAND.

TORQUE TABLE

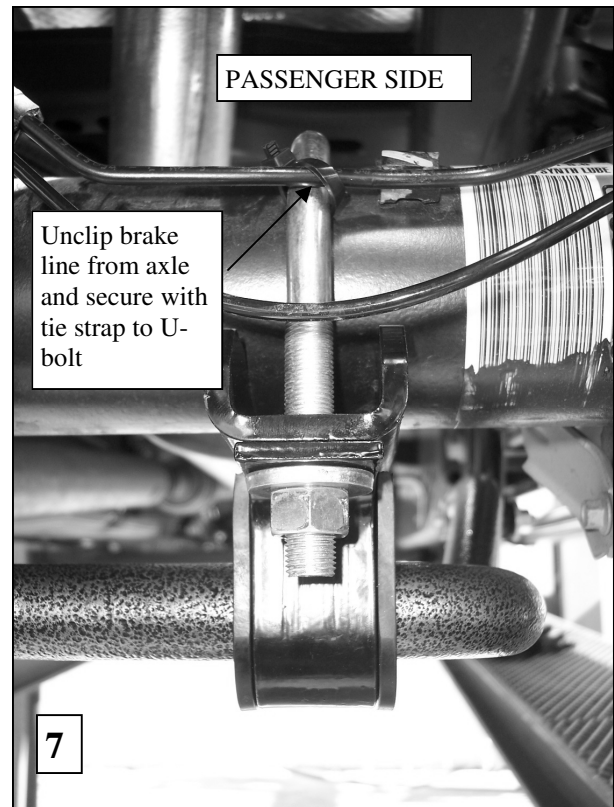
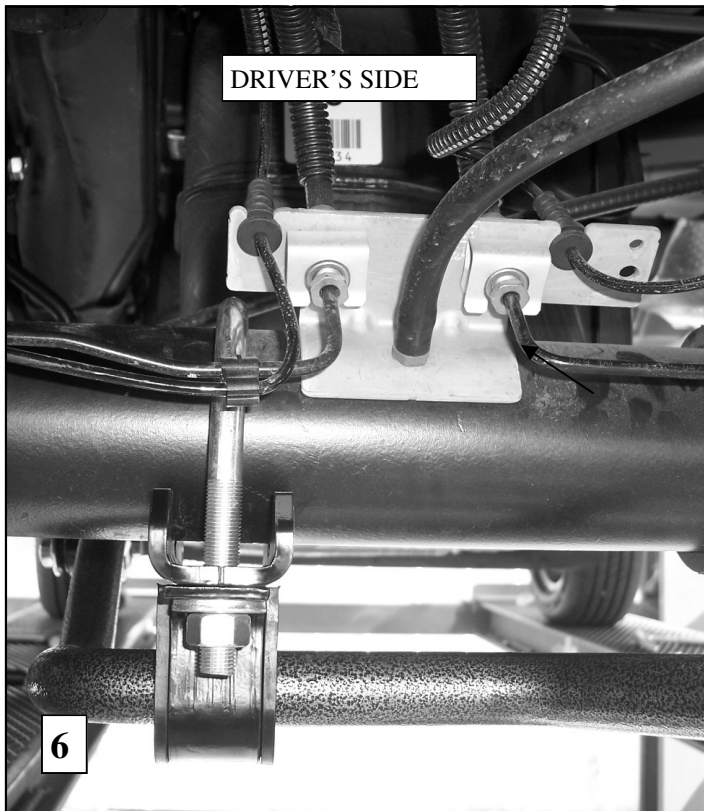
BOLT SIZE: 3/8" = 20-30 ft. lbs. - 7/16" = 35-45 ft. lbs. - 1/2" = 50-70 ft. lbs. - 9/16" = 70-90 ft. lbs. - 5/8" = 120 ft. lbs.

1. Install the Threaded Plates inside the rear shock crossmember as shown in Photo 2.
2. Attach clevis to threaded plate using the 1/2-20 X 1" bolts provided as shown in Photo 3. Align clevis as shown in photo and torque bolt to 40 ft-lb.
3. Insert hourglass bushings into the loops of the end links. Lubricate bushings with supplied lubricant to aid installations. Install sleeves into hourglass bushings.
4. Assemble end links together as shown in photo 4 with 9/16" jam nut on threaded portion of end link. Leave loose for adjustment later.
5. Loosely attach end links to clevis using 7/16-20 X 2-1/4" bolt and locknut as shown in photo 4. **Leave loose for adjustment later.**
6. Prepare axle to attach sway bar by unclipping brake line from tab on axle as shown in photo 7. **Install U-bolts over axle as shown in photos 6&7. Make sure that the U-bolts are under any brake lines, wires or hoses on the axle to avoid pinching or crushing when the U-bolts are tightened.**



Hellwig PRODUCTS.com

559-734-7451 800-367-5480 FAX 559-734-7460



7. Lubricate and install d-bushings on sway bar as shown in photos 1,6&7.
8. Install U-plates over the d-bushings as shown.
9. Attach sway bar to lower bushing in end link as shown in photos 1,4,&5 using 7/16-20 X 2-3/4" bolt, washers, and locknut. **Leave loose for adjustment later. It is important that the sway bar be installed initially with the end link attached to the outermost hole as shown in photo 5.**
10. Rotate sway bar into position and attach to axle by placing the legs of the U-bolts through the holes in the saddle brackets and U-plates. Fasten with thick washers and 1/2" locknuts. **Leave loose for adjustment later.**
11. With the sway bar properly aligned, ensure that all the vehicle components have the proper clearance, and no wires or hoses will be crushed or pinched when tightened.
12. Torque U-bolts to 50-60 ft-lb
13. Torque end link fasteners to 35-40 ft-lb.
14. Bounce the vehicle, check for clearance on all undercarriage components; exhaust, wires, shocks, brake and fuel lines. Test drive the vehicle and recheck for clearance and installation alignment.
15. The sway bar arms have three mounting holes. Mounting the sway bar on the outer hole is the nominal position. For firmer settings, use the inner holes. We recommend starting with the outer mounting hole as in photo (2) until you are accustomed to the vehicles new handling characteristics. Select the mounting point that best fits your driving style
16. After one week of driving recheck your installation recheck on a regular basis thereafter.

ATTENTION INSTALLER: BE SURE THAT THE CUSTOMER RECEIVES THIS INSTRUCTION SHEET, ALL IMPORTANT NOTE CARDS AND THE WARRANTY FORM